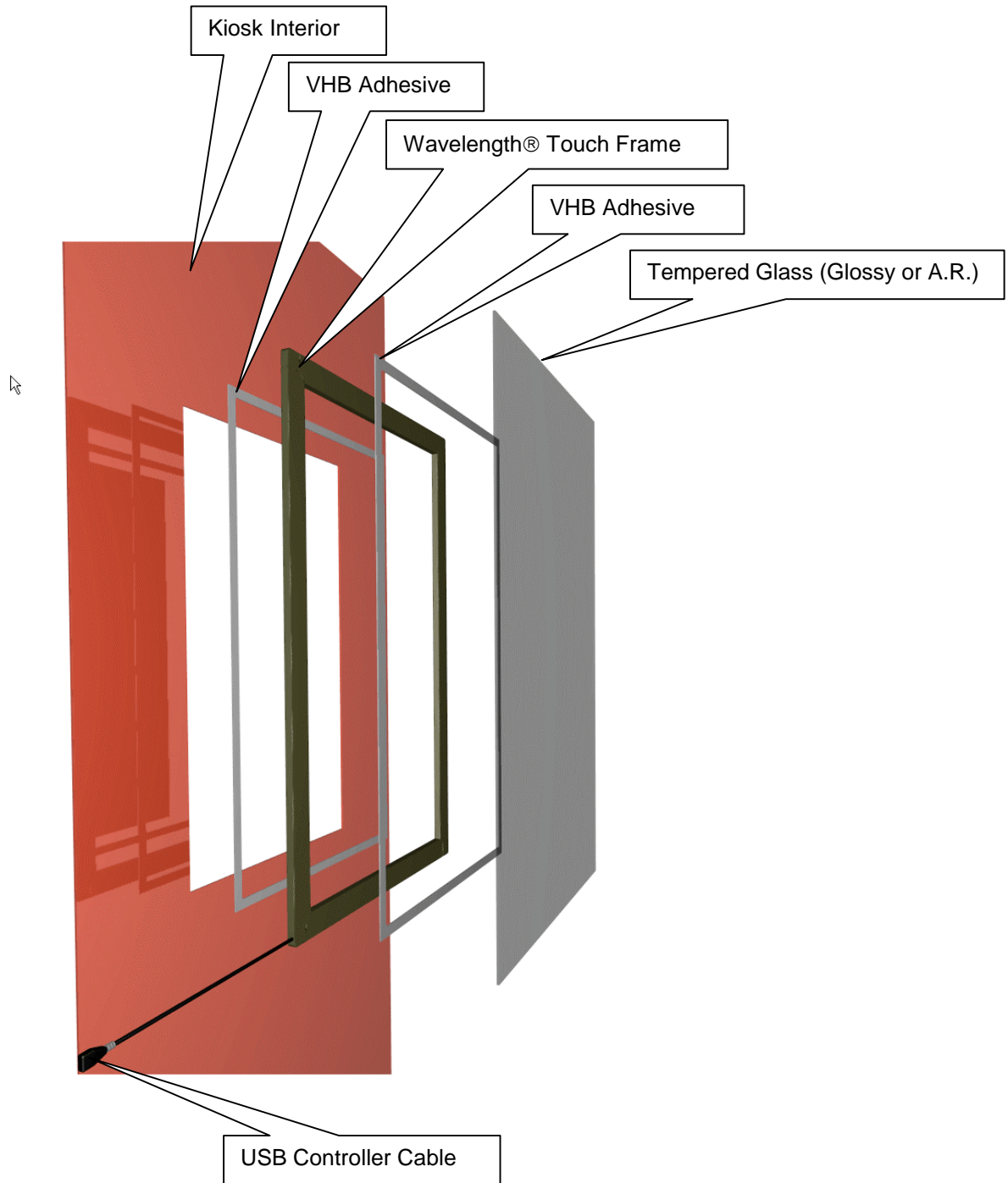


**Interior Exploded View of Wavelength Series "A" in a Kiosk/Panel-Mounted**



**The touch screen will arrive with VHB face adhesive and anti-reflective tempered glass already installed.**

### **Step 1.: Testing and Software Installation**

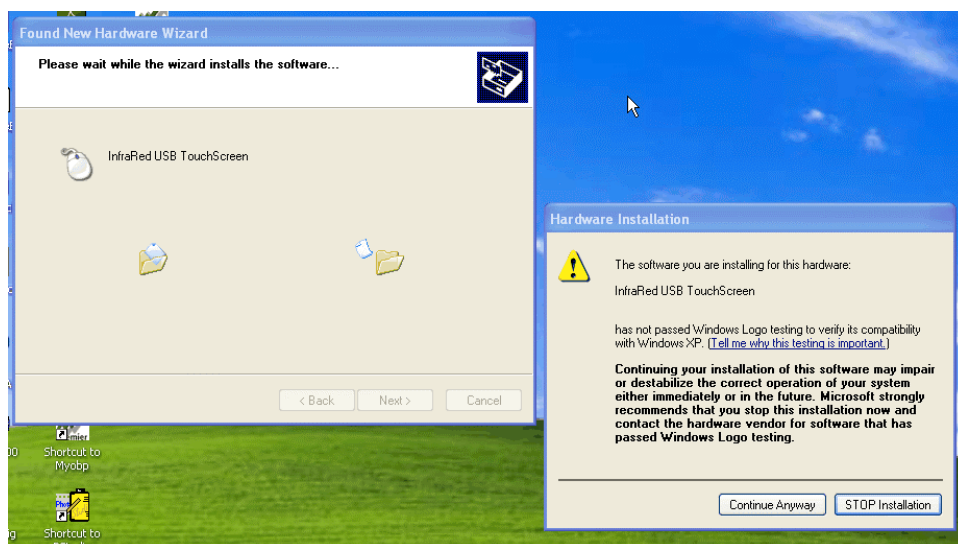
Test the functionality of the touch screen before proceeding with installation. Install the software driver from our website [http://www.ezscreen.com/download\\_current.html](http://www.ezscreen.com/download_current.html) onto the PC that will be used for the kiosk. Use the “USB Driver V.120”.

Once the software driver is installed, shut down the PC and plug in the touch screen USB cable into an available port. For testing purposes, use the USB cable on the touch screen without an extension cable. You can attach the USB extension cable, if necessary, after initial testing.

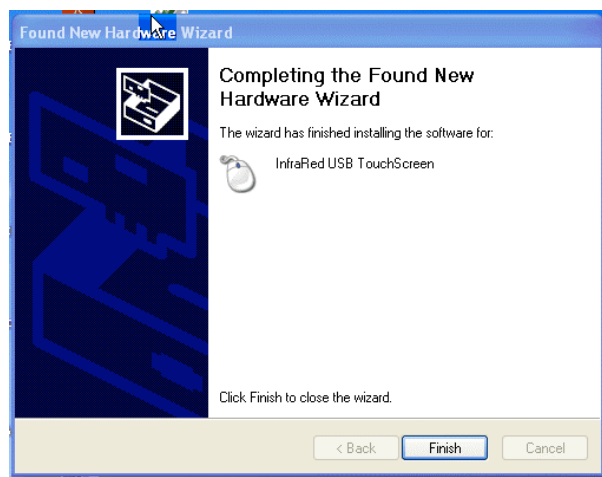
If your touch screen was supplied with a 5 volt adapter, attach this to the touchscreen and then plug into an available 110VAC outlet.

Now restart the PC. You should see a message onscreen like this:

The Hardware wizard should find the Infrared USB Touchscreen. Click “Continue Anyway”

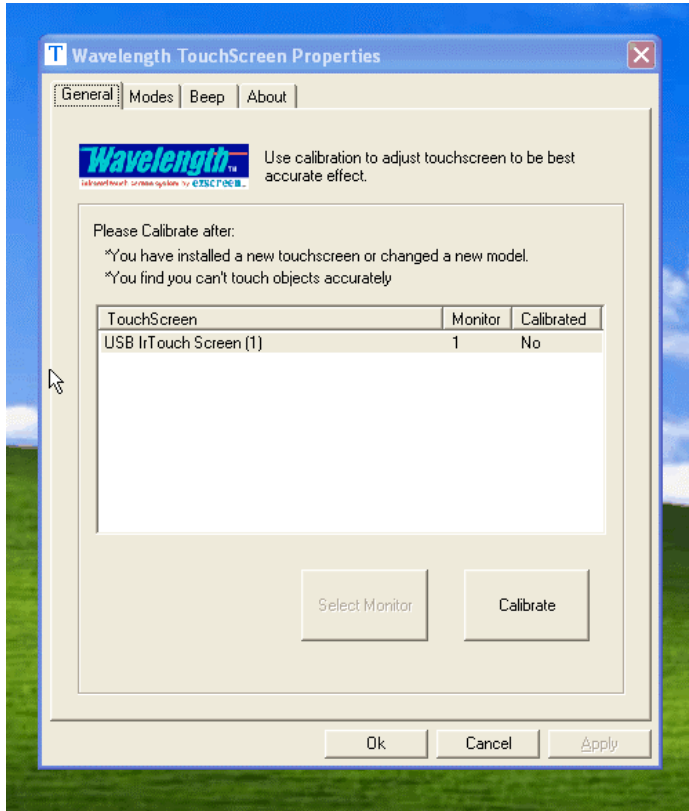


Click “Finish”. Now your Windows desktop should have an icon for the touch screen software.



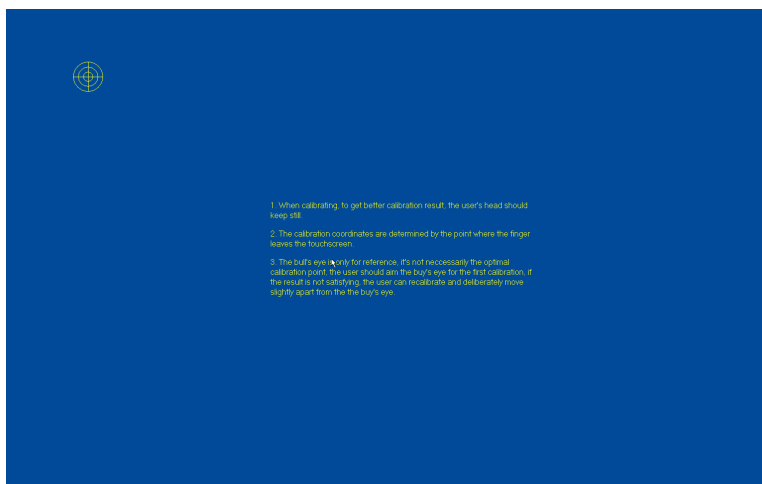


Double-Click the icon to open the program. The touch screen needs to be calibrated to your display.

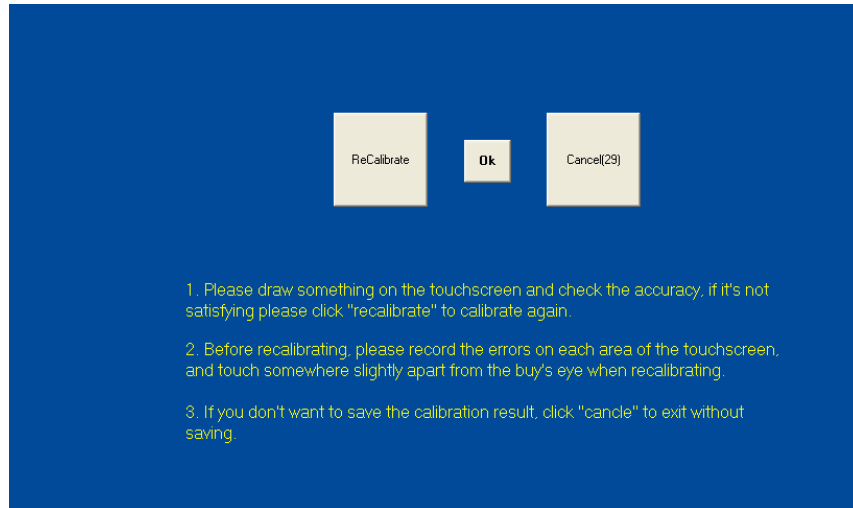


Click the “Calibrate” button and you will be brought into the calibration program.

Touch each bullseye on the screen to complete the calibration.



Once you have touched all four bullseyes, this confirmation screen will appear.



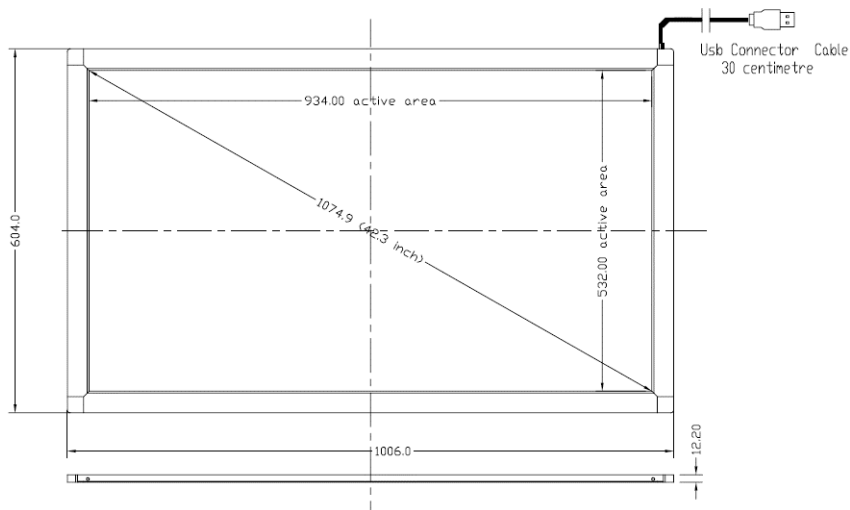
Touch the "OK" button. If calibration does not seem to be accurate, touch "Recalibrate" or the escape key on your keyboard to attempt this procedure again.

### **Step 2.: Prepare**

Shut down the PC and disconnect the touch screen.

### **Step 3.: Measure Twice**

Carefully measure to verify that the touch screen active/viewable area matches that of your existing cutout.



### **Step 3.: Cleaning**

Clean the interior of the kiosk around the cutout area. This area will be where the touch screen is bonded to the kiosk. It should be completely clean of grease, oil, dust, loose paint and any other contaminants. We recommend cleaning with isopropyl alcohol after degreasing to assure best adhesion of the VHB adhesive.

**NOTE: DO NOT REMOVE THE VHB ADHESIVE LINER YET**

### **Step 4.: Alignment**

**Note: Installation and alignment is best accomplished with the kiosk in a horizontal, face down position.**

To assure a proper installation, place the touch screen assembly onto the cutout area of your kiosk. Use masking tape to mark the exact outside corners of the touch screen frame onto your interior kiosk wall. These marks will allow you to accurately place the touch screen into position.

Note: Orientation of the USB cable out position is strictly a matter of calibration. It may be oriented in any direction.

### **Step 5.: Installation**

We suggest that at least two persons participate in installation. Each should have practiced aligning the touch screen to the kiosk cutout as a team. You only have one attempt at aligning the touch screen to the cutout. The 3M VHB adhesive is very unforgiving. Once it touches it is adhered with a great deal of tenacity.

Once all has been tested and alignment is assured, you may remove the paper liner from the VHB face adhesive. Place the touch screen frame onto the interior of your kiosk housing utilizing the masking tape corner markers as a guide.



### **Step 6.: Finish**

Time and pressure are required for a permanent and long-lasting installation. Once the touch screen assembly is in place, place heavy hand pressure (30~50 pounds) on the glass about 6 inches inwards of the frame. Do this around the entire interior perimeter at least three times.

Now place a weight upon the entire assembly. The display itself is a good way of accomplishing this. Leave this in its horizontal position for 72 hours to achieve a full cure of the 3M VHB adhesive. Fully cured, the adhesive imparts a holding strength of 100 pounds per square inch.

### **Notes On Display Integration**

We suggest that there be a free-air gap between the touch screen and the display when being used in sunlight or other severe conditions. Free movement of air prevents heat from building up between the display and touch screen glass which could result in early degradation of the display. The size of this gap is up to the kiosk designer. We suggest a minimum of ¼" when used with an internal air recirculator/cooler system. Please contact us with any questions about your installation.

#### Contact Information:

Ezscreen Touch Screen Systems  
4955 Gulf Freeway  
Houston, Texas 77023 USA

Phone Local/Int'l.: 713.926.1186  
Toll-Free N. America: 888-TouchEZ (888.868.2439)  
Fax: 713.926.3110  
website: [www.ezscreen.com](http://www.ezscreen.com)  
email: [tech@ezscreen.com](mailto:tech@ezscreen.com)