

Installing ezscreen® kits for LCDs

Steps to integrating ezScreen® part no. EZ151-ng with 15" LCD Monitor



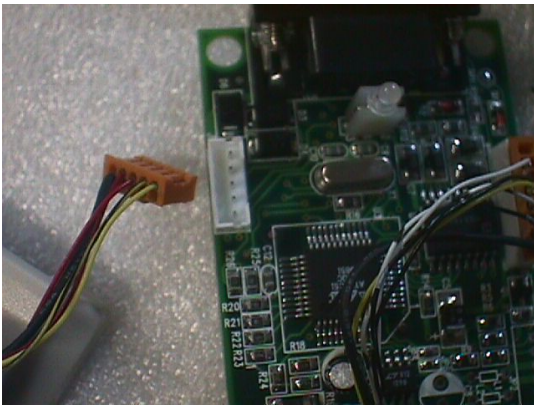
Remove the monitor base (4 machine screws located on rear)

- Remove housing (5 pan head screws on rear), gently prying the housing's clamshell apart beginning at center bottom.
- Grasping the sides and the interior panel mount, turn the unit face up..
- Now lift the front bezel housing from the panel display assembly.
- Use a soft lint-free wipe slightly moistened with water to clean the face of the LCD display panel.
- (While wearing thin cotton or latex gloves) Strip the protective film from the the front and back side of the touchscreen sensor panel.
- Strip the white backing paper from the back of the touchscreen sensor to expose the adhesive.



Mount the touchscreen sensor on top of the display panel. Only the active area (clear) of the sensor should be over the active display screen area. Inactive area of the touchscreen sensor is identified by the metallic sensor circuit tracing and black vinyl foam spacer tape (not shown in photo) along the outer edges. Properly oriented, the flexible printed circuit ribbon of the sensor panel (4-pin .100" molex connector at its end) will be located at the bottom of the display screen extending towards the center of same.

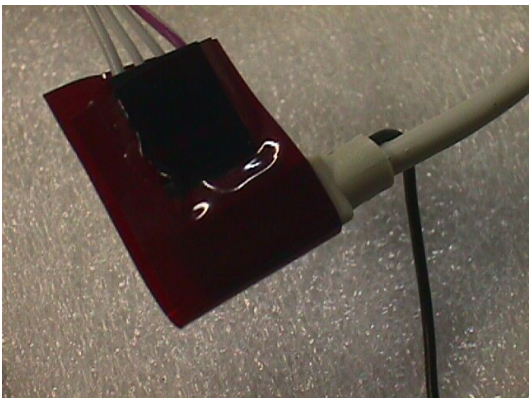
WARNING: DISCONNECT ALL POWER AND ALLOW SYSTEM TO SIT IDLE FOR TEN MINUTES BEFORE WORKING ON YOUR MONITOR.



Remove the housing cover (4 panhead screws) from the Ezscreen controller box (v4.3) and disengage the wire female plug from the board.

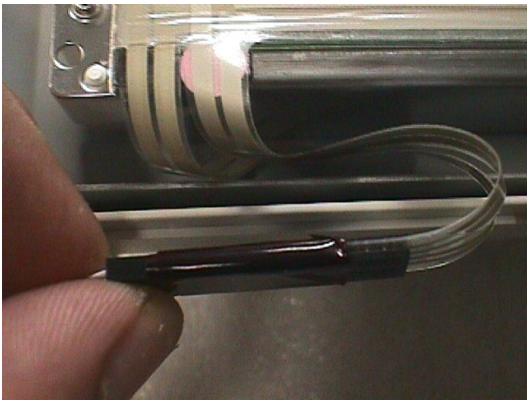


(Note: Particular features of this display required the use of an extension cable. This isn't normally required or supplied with the standard kit.) Attach the male end of the 4-wire extension into the female receptacle on the sensor panel's printed circuit ribbon tail. Orient the color coded tracer wire (red) so that it is on the bottom. Wrap the connection with tape (we suggest cellophane tape, if using vinyl tape be sure not to stretch it which would cause it to un-wrap over time) to assure that the connection will not pull loose easily or ground-out on surrounding metal surfaces.

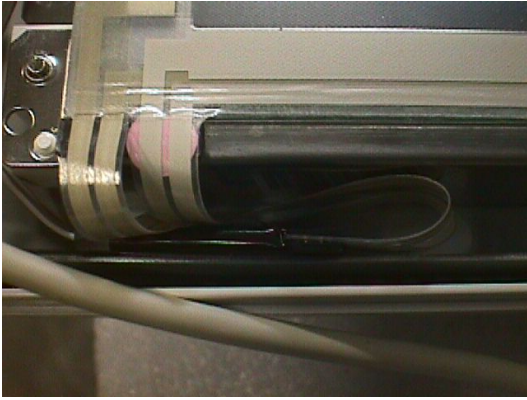


Attach the 4-pin wire (removed opposite end from controller box) to the the wire extension(wire extension not supplied with normal kit) oriented as shown. Wrap a loop of tape around the connection (encapsulating it) to ensure integrity of the connection.

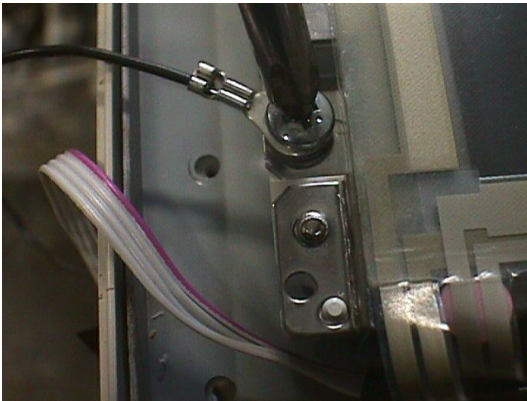
WARNING: DISCONNECT ALL POWER AND ALLOW SYSTEM TO SIT IDLE FOR TEN MINUTES BEFORE WORKING ON YOUR MONITOR.



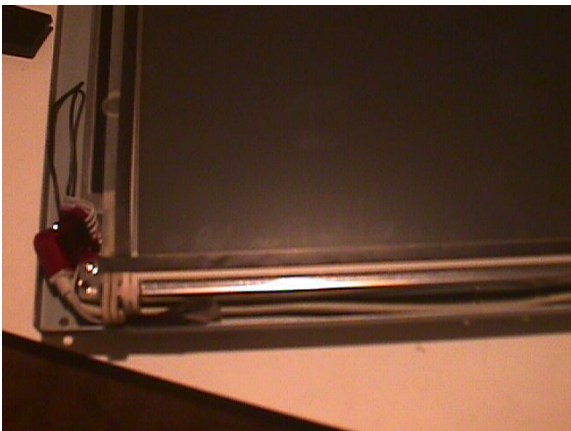
Bend the connections as shown. Never crimp or twist these printed circuits. The four-wire extension cable, however, is quite capable of withstanding crimping, folding and twisting.



Tuck the printed circuit connection into the mounting tray



Connect the touchscreen ground wire to the display's left-bottom pan head mounting screw.



Orient the encapsulated 4-pin connection so that it rests atop the ground wire. The 4-pin cable will now feed easily in the pan area just beneath the display panel.

WARNING: DISCONNECT ALL POWER AND ALLOW SYSTEM TO SIT IDLE FOR TEN MINUTES BEFORE WORKING ON YOUR MONITOR.

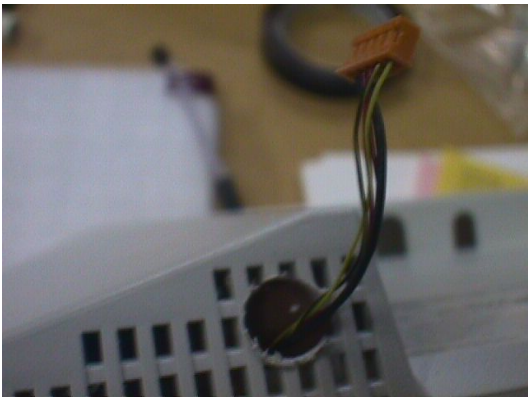


Remove the hole grommet (located beneath the monitor's control board) and then feed the end of the 4-pin cable wire through (connects to the EZscreen Controller box). Replace the hole grommet.



Locate and then drill back cover for the wire-exit grommet (supplied). Our hole selection location exits the wire on the bottom of the back cover, near the panel's base mounting area within the grid of ventilation holes.

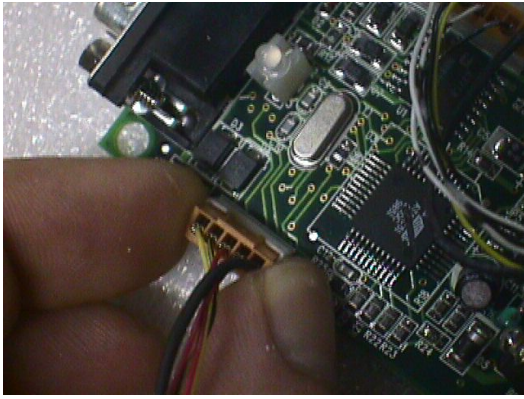
Place the monitors front bezel face down and then replace the display panel into its original location.



After cleaning (vacuuming) the rear housing, exit the wire through the newly drilled hole. Insert the wire-exit grommet and pull the wire through so as to tightly engage the wire mold. Optionally, you may attach a cable tie to the interior section of the wire mold and grommet to assure integrity. Attach the rear housing using the original 5 pan-head screws

To prevent damage to the 4-pin wire resting in the lower pan area below the display panel use masking tape/low-temp hot glue or double sided tape to hold the wire to the side of the pan. The lower middle pan-head screw presents the greatest problem.

WARNING: DISCONNECT ALL POWER AND ALLOW SYSTEM TO SIT IDLE FOR TEN MINUTES BEFORE WORKING ON YOUR MONITOR.



Re-attach the 5-wire connection to the Ezscreen controller. Replace the housing using the original 4 pan-head screws.